

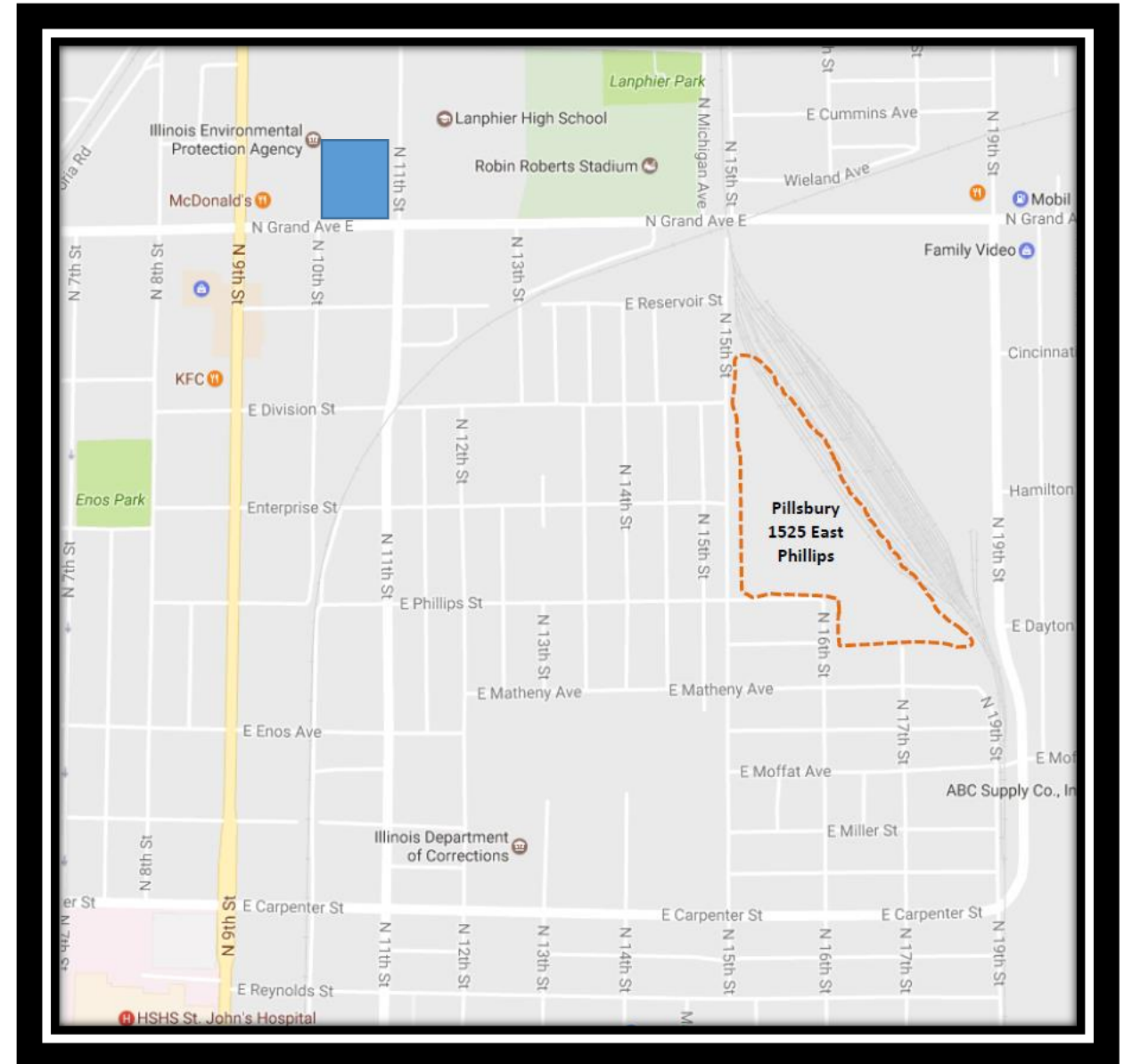
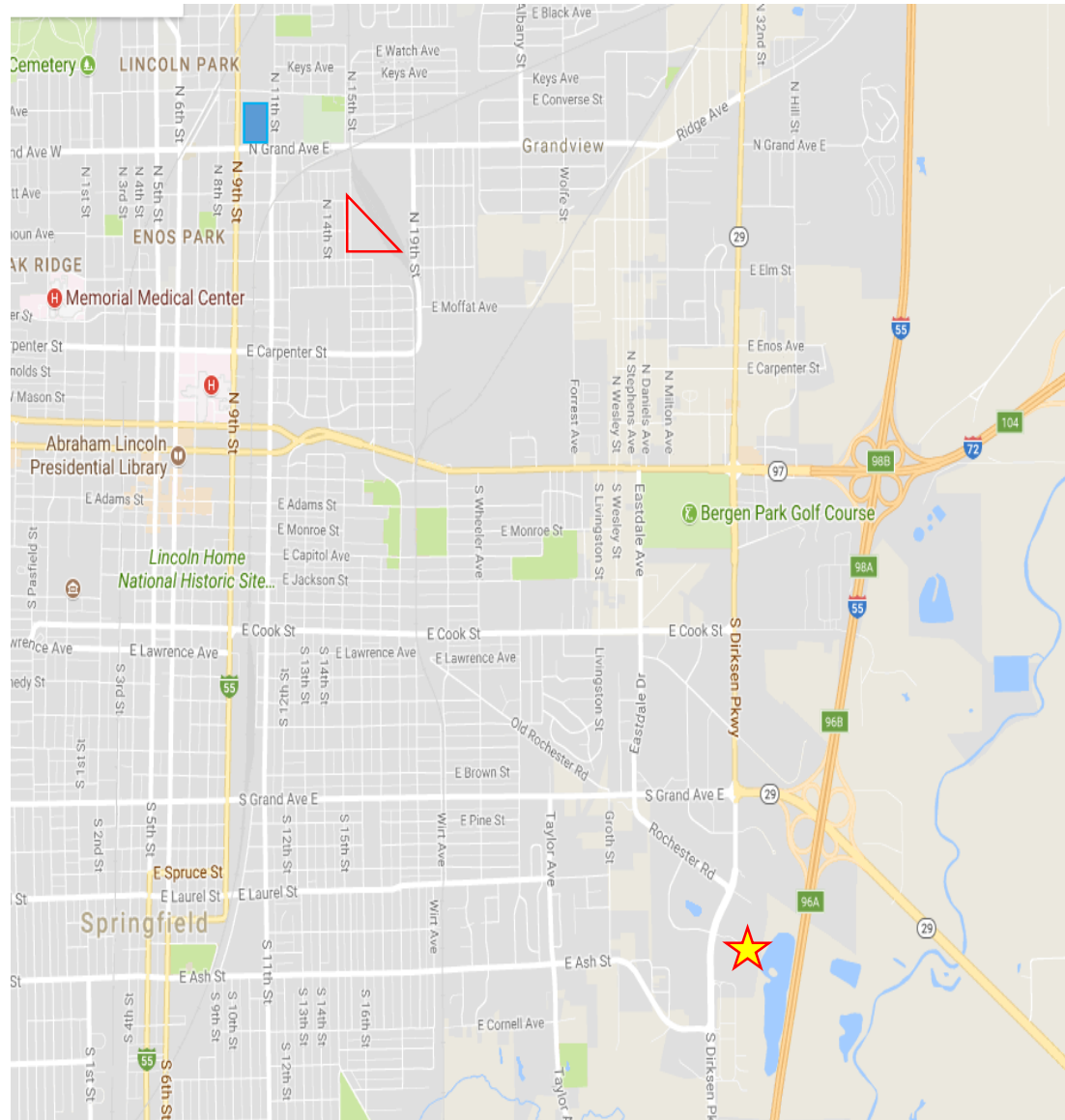
Pillsbury Mills



Regional Response Team
Springfield, Illinois - October 25, 2017

PMills Location in Springfield

GK



State Agency Roles

GK

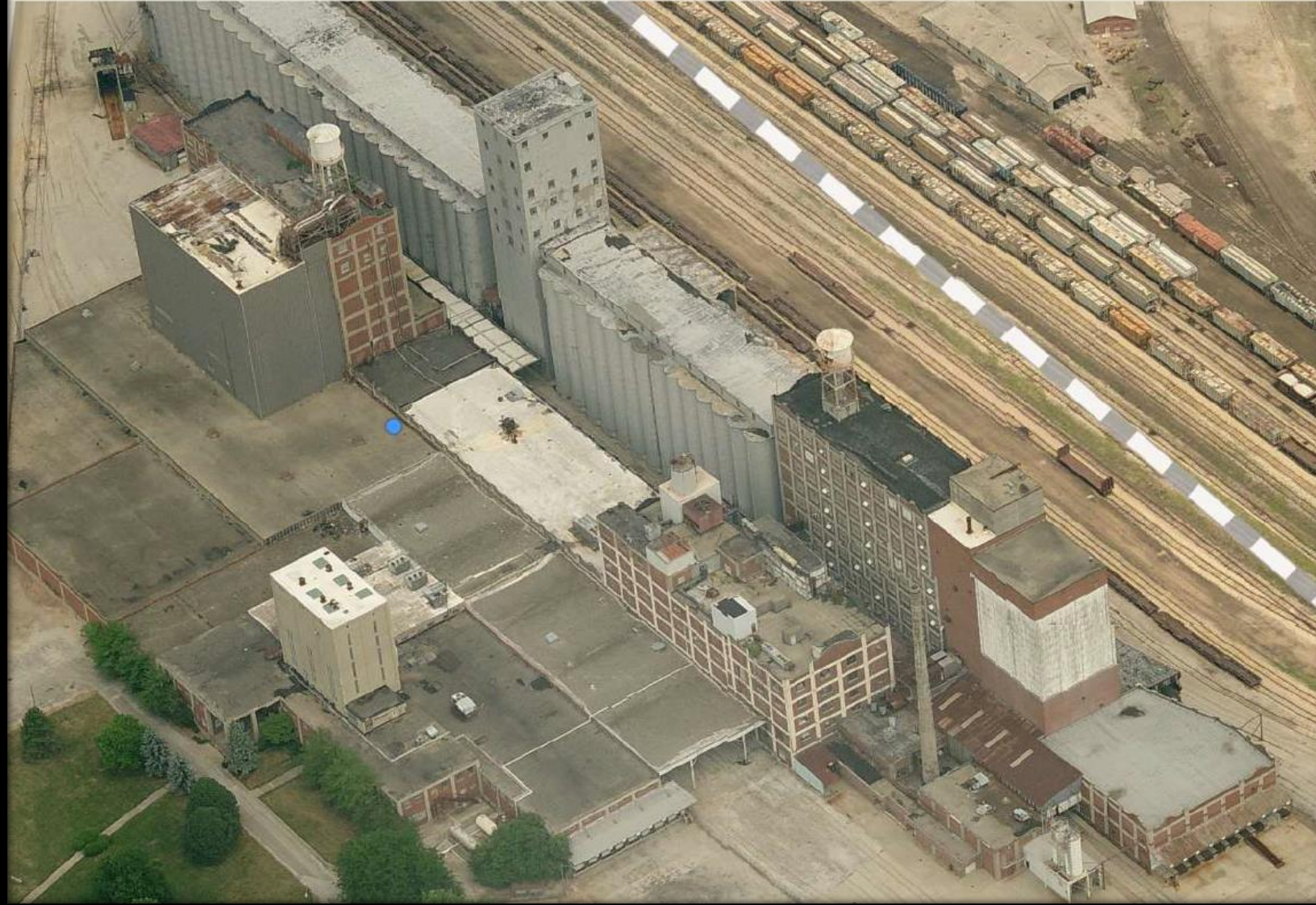
Illinois Environmental Protection Agency (EPA)

- Investigates violations of state and federal asbestos laws and regulations
- Notified of certain demolition and renovation activities involving asbestos
- *No State-issued permit required nor issued for demolition or renovation involving asbestos*

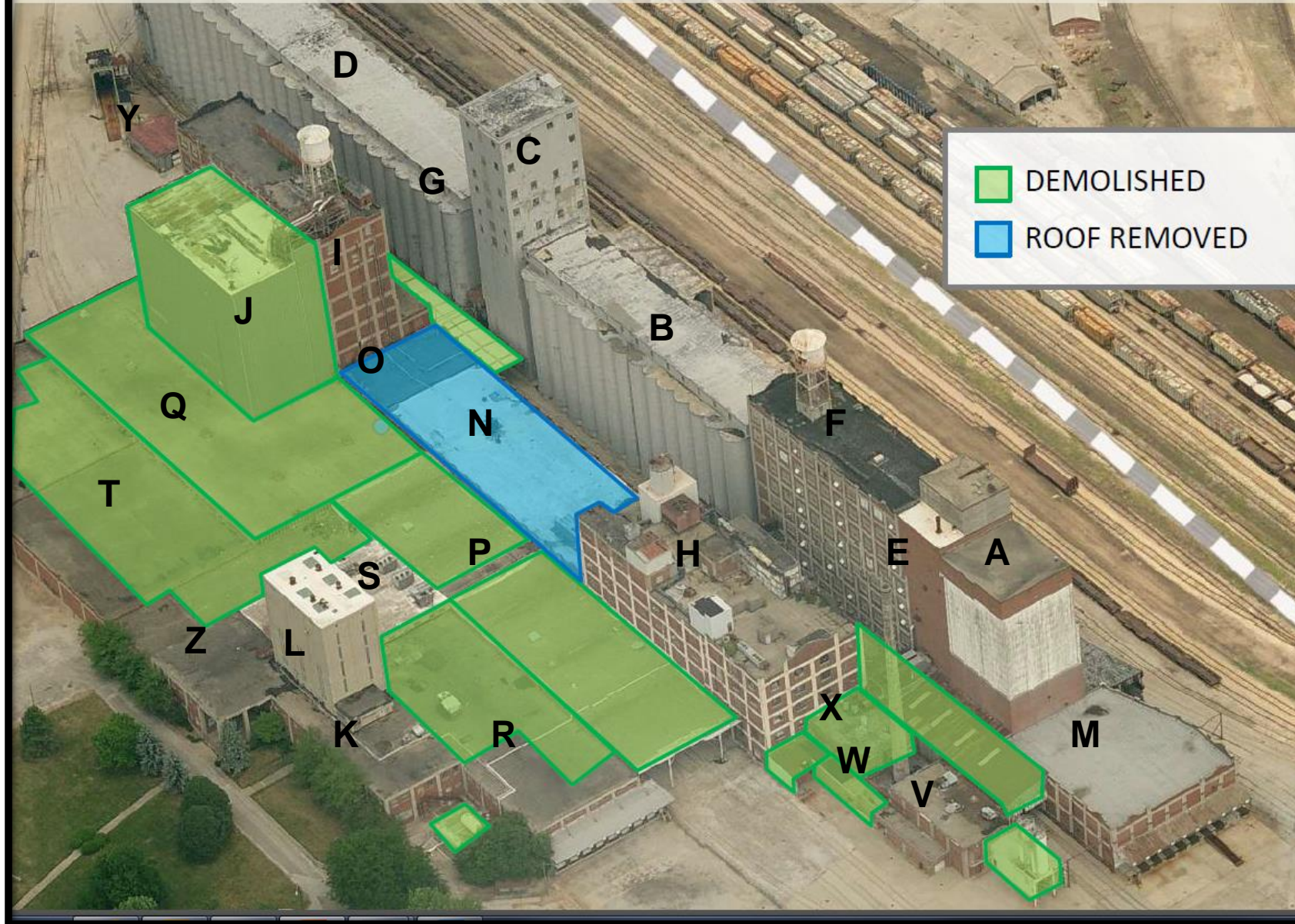
Illinois Attorney General's Office (AGO)

- Enforces violations on behalf of Illinois EPA and State

Pillsbury Mills prior to demolition



Pillsbury Mills after demolition



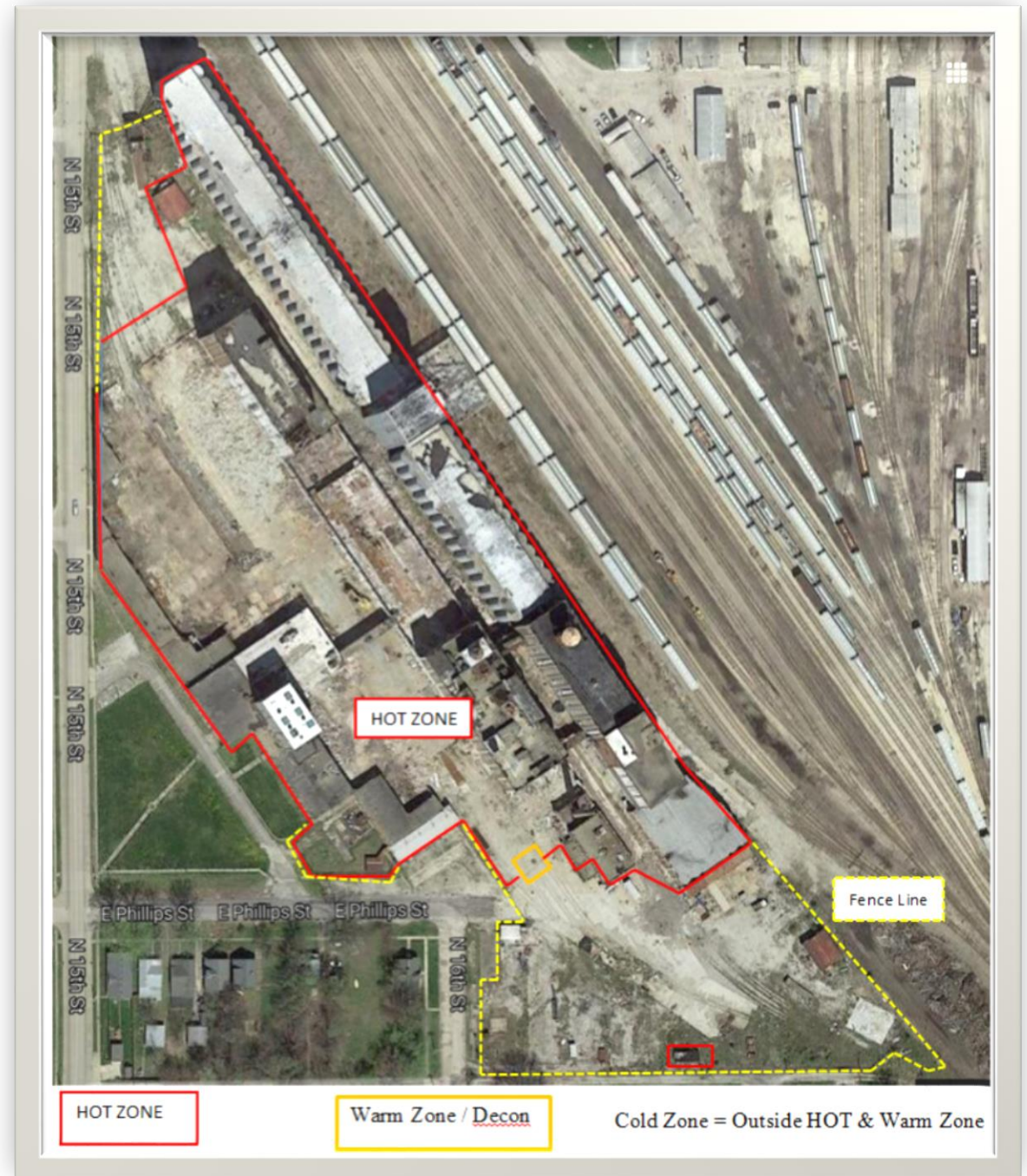
Illinois EPA Involvement

August 2015

State Enforcement

Extensive Evaluations

Coordination with Public Safety Officials





Illinois EPA Inspection – September 9, 2015

Aerial view of demolition



Illinois EPA Inspection – September 9, 2015

Aerial view of demolition



Illinois EPA Inspection – September 9, 2015

Aerial view of demolition

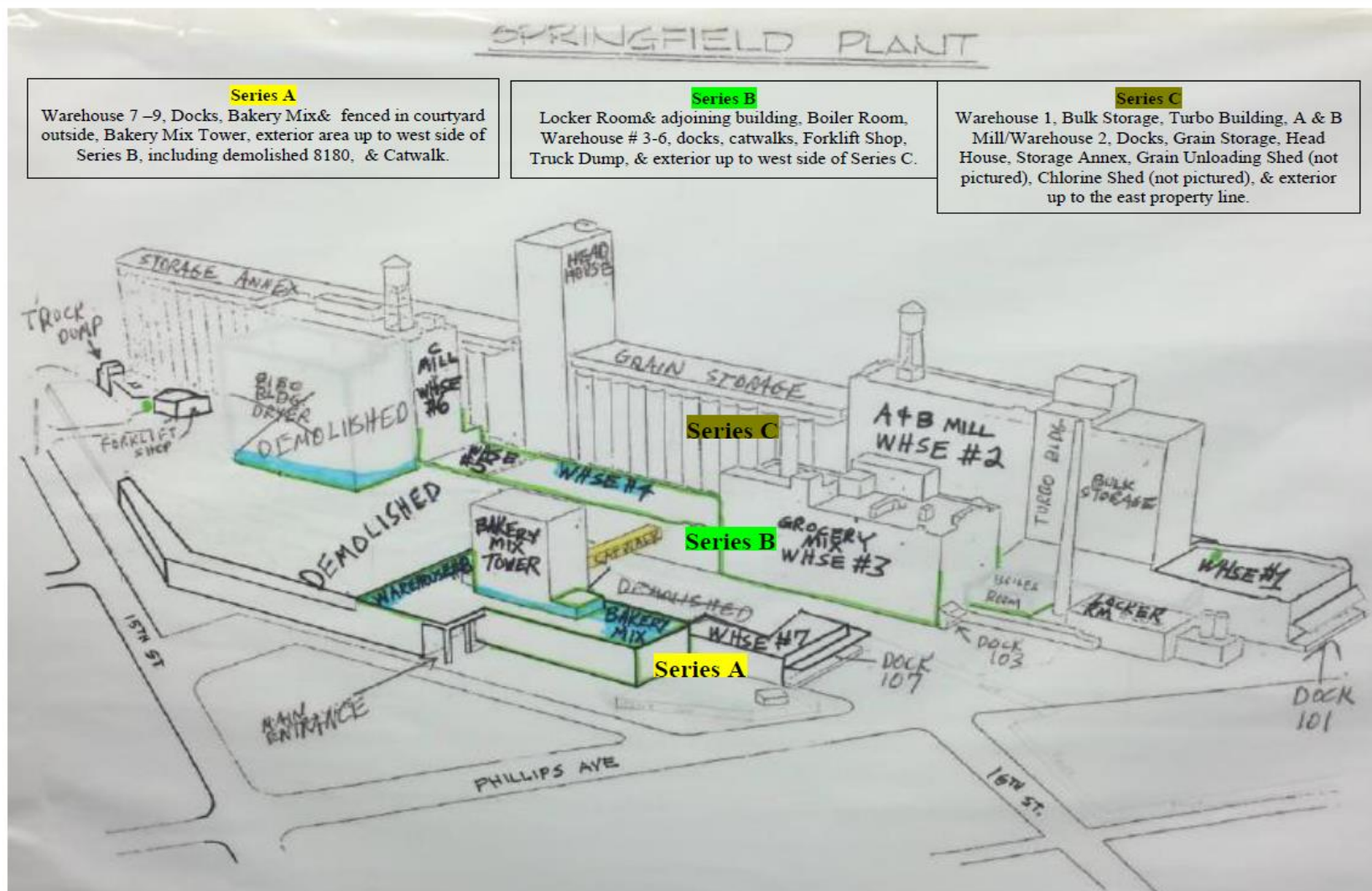


Illinois EPA Inspection – September 9, 2015

Aerial view of demolition

Extensive Evaluations / Building Designation

GK



Removal Action Begins

KT

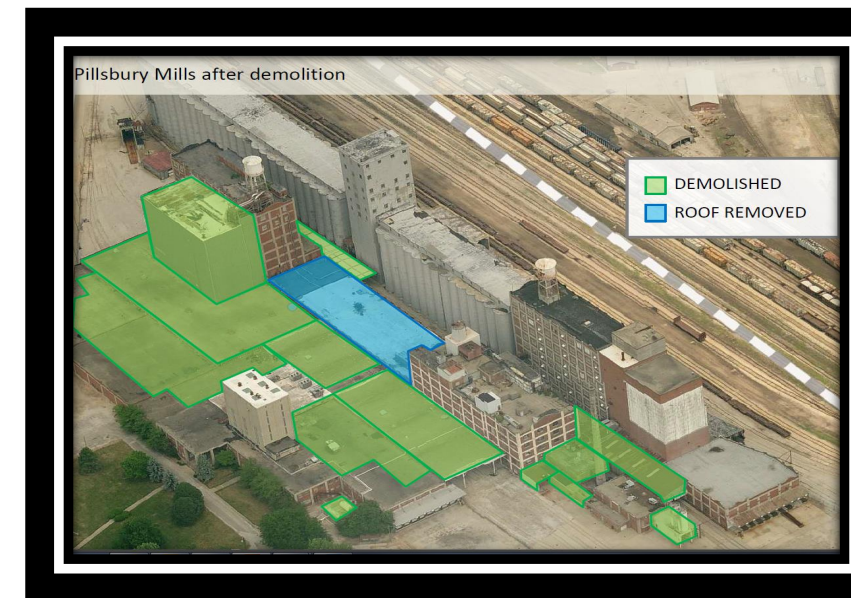


Exposure / Hazard Concerns

KT

- Asbestos
- Chemicals (sulfuric acid, nitric acid, cyanide, cobalt chloride, ammonium nitrate)
- Pesticides / Herbicides
- Cylinders (chlorine, acetylene, halon)
- Waste Oils / Fuel / Anti-freeze (bulk)
- Mercury / PCB Ballasts
- Uneven/ Unstable Surfaces/Rotten floors
- Open Elevator Shafts / Potential falls
- Loose overhead metal/debris
- Sharp objects
- Slippery Surfaces / Stairs
- Flooded Subsurface Areas
- Animals / Feces
- Respirator use / Heat Stress

Warehouse #7 Footprint Confined Space (potential)



Bakery Mix Tower – East Side



2200 tons asbestos contaminated debris
sent off-site

Warehouse #7



Off-Site Disposal of Asbestos Debris



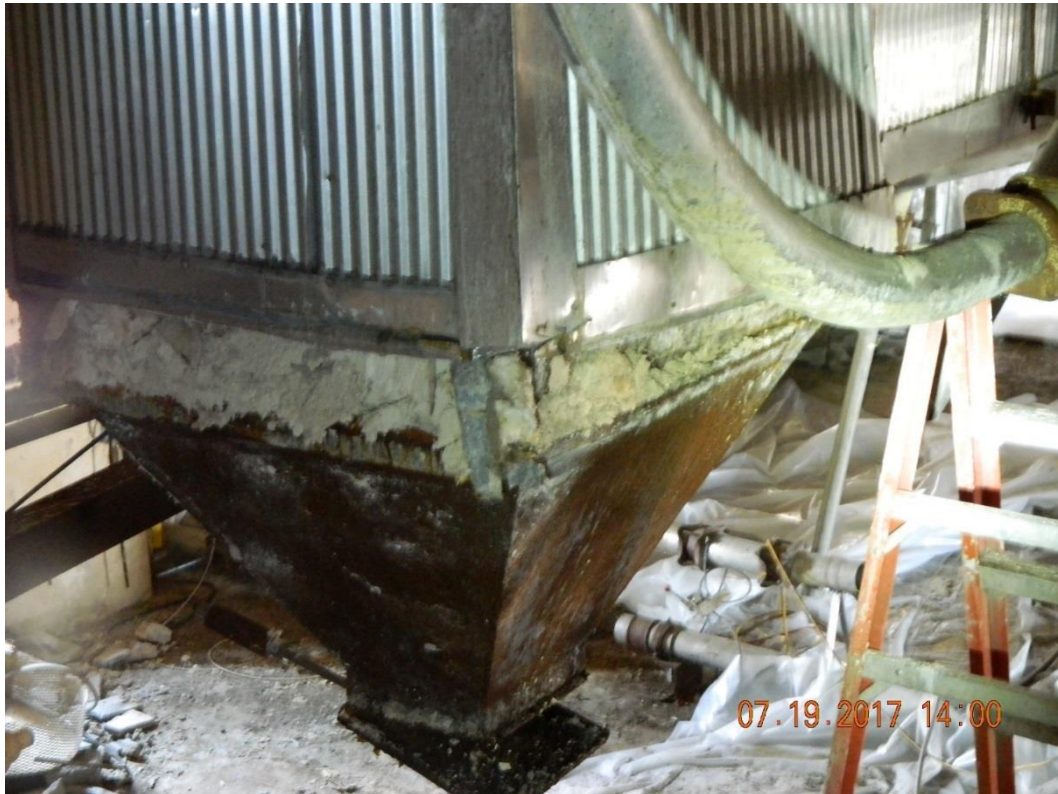
Bakery Mix Tower and C Mill



8775 / 1 - 240
DEPIA FUMEX (6 BAGS)
ALUMINIUM PHOSPHIDE UN 1397
STOW



A & B Mill Warehouse #2



Grocery Mix Basement – Boiler Room





Grocery Mix Basement Boiler Room





Off-Site Disposal

- ACM debris – 2200 tons (complete)
- ACM (bulk) – 1160 cy (29 – 40 cy boxes) (complete)
- Waste oil/fuel – 9 – 275 gallon totes (pending)
- Waste anti-freeze – 3 – 55 gallon drums (pending)
- Cylinders – O₂, CO₂, chlorine, acetylene, ammonia, halon, 6 unknown
- Fluorescent light bulbs – 3700 (complete)
- PCB ballasts – 950 (complete)
- Mercury – 12 lbs. (pending)
- Lab Pack – over 100 various containers (pending)

In Conclusion

